



# MONTHLY MEMBERSHIP PROGRESS REPORT

District 2 S4

Results as of: 9/30/2014

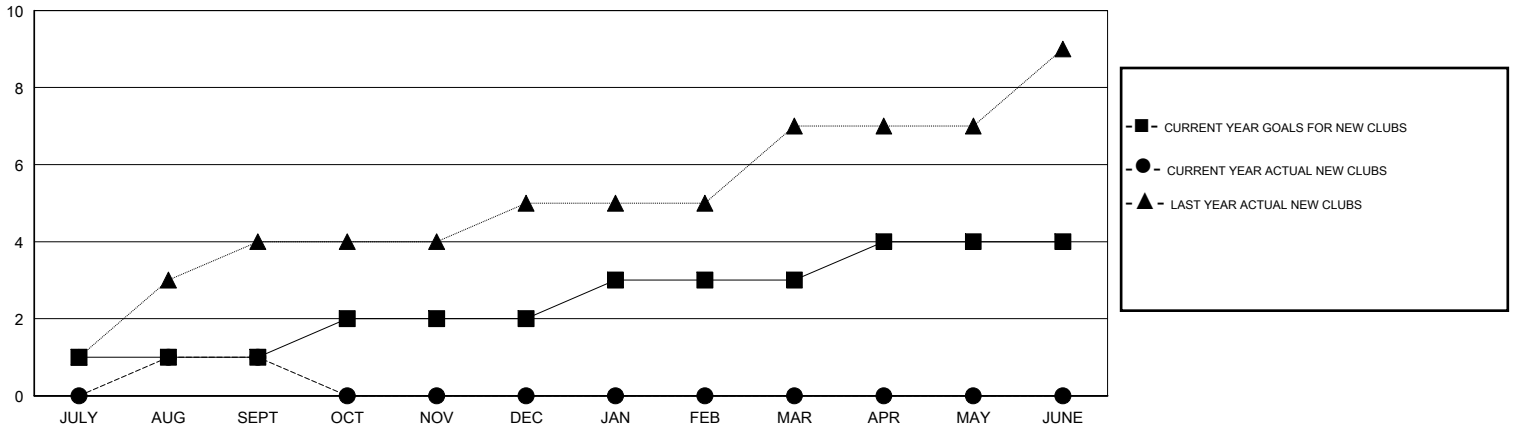
GMT: HAL GRIFFIN

LOCATION TEXAS

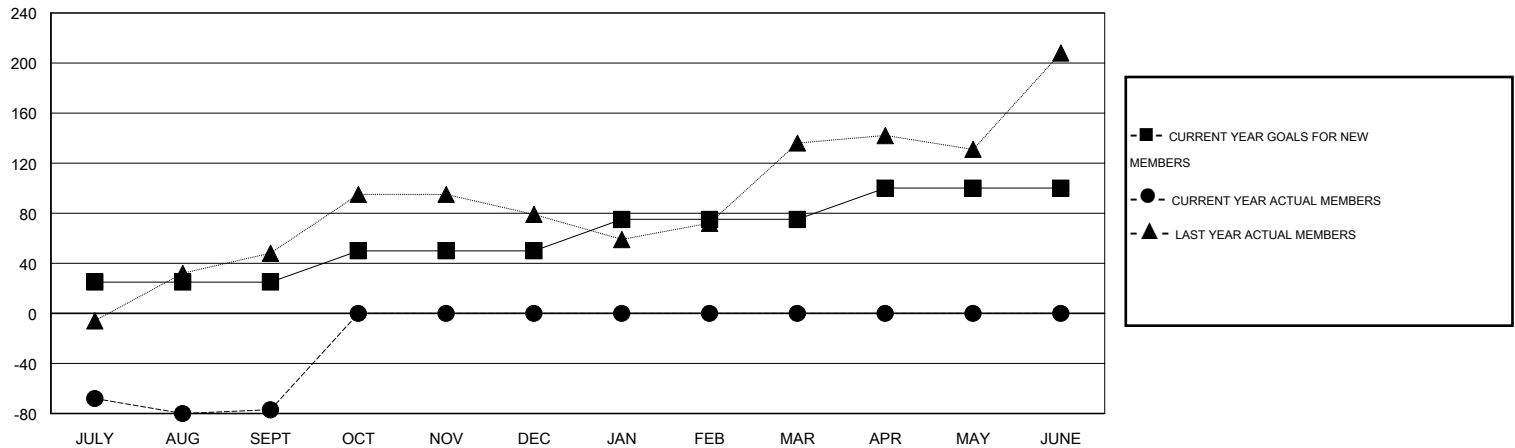
GMT CA 1

Clubs					Members				
RESULTS FOR 2014-2015					RESULTS FOR 2014-2015				
QUARTER	NEW CLUB GOAL	NEW CLUBS	DROPPED CLUBS	NET GAIN/LOSS	QUARTER	NEW MEMBER GOAL	CHARTER AND NEW MEMBERS ADDED	DROPPED MEMBERS	NET GAIN/LOSS
JULY/AUG/SEPT	1	1	1	0	JULY/AUG/SEPT	25	116	193	-77
OCT/NOV/DEC	1	0	0	0	OCT/NOV/DEC	25	0	0	0
JAN/FEB/MAR	1	0	0	0	JAN/FEB/MAR	25	0	0	0
APR/MAY/JUNE	1	0	0	0	APR/MAY/JUNE	25	0	0	0

GOALS AND ACTUAL NEW CLUBS CUMULATIVE



GOALS AND ACTUAL MEMBERS CUMULATIVE



DROPPED CLUBS: 1	36 CLUBS OF 84 ADDED 1 OR MORE NEW MEMBERS	<u>GENDER DISTRIBUTION</u>			
<u>DROPPED MEMBERS</u>		MALE	1,494 (61.25%)		
DECEASED	7	FEMALE	945 (38.75%)		
CLUB CANCELLED	0	<a href="#">CLICK HERE FOR HEALTH ASSESSMENT DATA</a>			
OTHER	186			FAMILY UNIT MEMBERS	459
TOTAL	193			HEAD OF HOUSEHOLD	227
		NON-HEAD OF HOUSEHOLD	232		